

CMO1-I/2.128c

İşfahān

Nağş semā'ī Hācī Es'ad Efendi

Ey nesīm-i seheri cānda yeriñ var seniñ

Critical Report

Cüneyt Ersin Mihçı

With contributions from
Neslihan Demirkol

Funded by the Deutsche Forschungsgemeinschaft
(DFG, German Research Foundation) - Project number 265450875

This work is licensed under a Creative Commons Attribution- ShareAlike 4.0 International License
<https://creativecommons.org/licenses/by-sa/4.0/>



The electronic version of this work is also available at:
<https://corpus-musicae-ottomanicae.de>

Nakış semâ'î Hâcî Es'ad Efendi

Ey nesîm-i seherî cānda yeriñ var seniñ

Source	TR-İüne 204-2
Location	P. 168, ll. 1–11
Makâm	İsfahân
Usûl	Yürük semâî
Genre	Nakış semâî
Attribution	Es'ad Efendi (1685–1753)
Work No.	CMOv0080

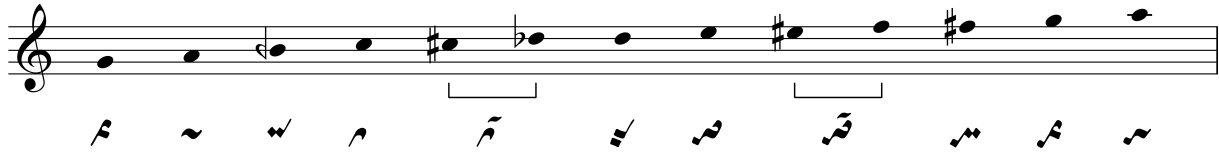
Remarks

This piece was marked with a cross sign in black ink on the right side of the word “İsfahân” at the top of the page.

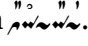


Structure

Section	Text	Rhyme	Melody	Cycles
H1	1	a	A	5
	2	a	B	5
	t1		C	20
	2	a	B	5
H2 (m)	3	b	D	5
	4	a	B	5
	t1		C	20
	4	a	B	5

Pitch Set



Notes on Transcription

- 6 For easier navigation, the editor inserted the segno sign that connects divs. 30 and 35 with div. 6.
- 10.1 The original version of this group seems to have been . The second and fourth pitch signs were changed to triplets.
- 17.3 The scribe corrected  to .

C.M.