

CMO1-I/2.146c

Şabā

Nağş semā'ī

Cefāya ey büt-i nevreste tākātım var yok

Critical Report

Cüneyt Ersin Mihçı

With contributions from
Neslihan Demirkol

Funded by the Deutsche Forschungsgemeinschaft
(DFG, German Research Foundation) - Project number 265450875

This work is licensed under a Creative Commons Attribution- ShareAlike 4.0 International License
<https://creativecommons.org/licenses/by-sa/4.0/>



The electronic version of this work is also available at:
<https://corpus-musicae-ottomanicae.de>

Nağş semâ'î

Cefāya ey büt-i nevreste t̄aḳatim var yok

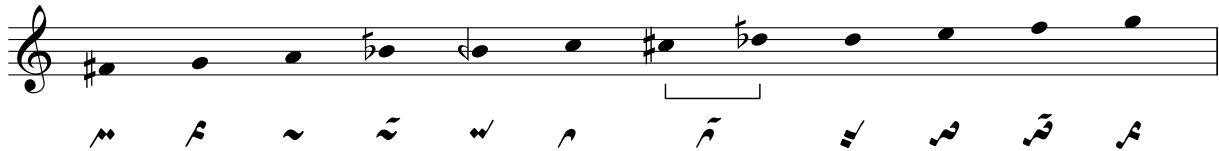
| | |
|--------------------|------------------|
| Source | TR-İüne 204-2 |
| Location | P. 192, ll. 1–12 |
| Makâm | Sabâ |
| Usûl | Yürük semâî |
| Genre | Nakiş semâî |
| Attribution | — |
| Work No. | CMOv0098 |

Remarks

This piece was marked with “x”, which is placed on the right side of the makâm name “şabâ”. In TRT-NA, this piece was attributed to Dellâlzâde İsmâîl Efendi (d. 1869). In NATM, this piece was attributed to Kara İsmâîl Ağa.

Structure

| Section | Text | Rhyme | Melody | Cycles |
|---------|------|-------|--------|--------|
| H1 | 1 | a | A | 6 |
| | 2 | a | B | 6 |
| | t1 | | : C : | 8 |
| | t2 | | D | 15 |
| H2 (m) | 3 | b | E | 4 |
| | 4 | a | B | 6 |
| | t1 | | : C : | 8 |
| | t2 | | D | 15 |

Pitch Set**Notes on Transcription**

- 10–12 The scribe gave the second line in inverted commas.
 14 In divs. 14.1.2–14.1.3, the scribe gave the second line in inverted commas.
 15.2.3 The scribe gave the word “yār” in inverted commas.

Consulted Concordances

NATM/V, pp. 355–7; TRT-NA, REPno. 2792.

C.M.