

CMO1-I/2.163c

‘Acem ‘ařırān

Semā‘ī sengīn Dede Efendi

Ey lebleri mül gönça-yüzi gül serv-i bülendim

Critical Report

Cüneyt Ersin Mihçı

With contributions from
Neslihan Demirkol

Funded by the Deutsche Forschungsgemeinschaft
(DFG, German Research Foundation) - Project number 265450875

This work is licensed under a Creative Commons Attribution- ShareAlike 4.0 International License
<https://creativecommons.org/licenses/by-sa/4.0/>



The electronic version of this work is also available at:
<https://corpus-musicae-ottomanicae.de>

Semâ'î sengîn Dede Efendi

Ey lebleri mül gönça-yüzi gül serv-i bülendim

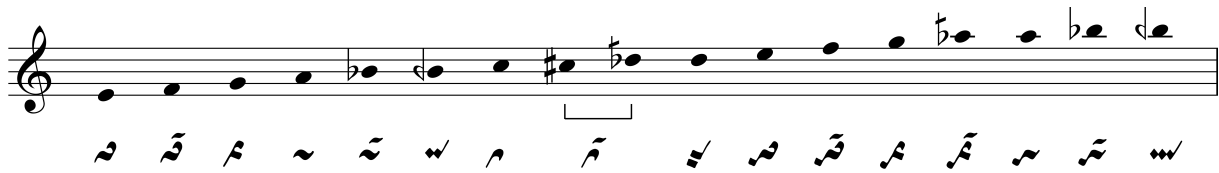
Source	TR-Iüne 204-2
Location	P. 211, ll. 1–9
Makâm	Acem aşîrân
Usûl	Sengîn semâî
Genre	Semâî
Attribution	İsmâîl Dede Efendi (1778–1846)
Work No.	CMOv0115

Remarks

From div. 6 onwards, the scribe did not provide any syllables in the text underlay. The distribution of the syllables from divs. 7–18 was based on TMKlii.

Structure

Section	Text	Rhyme	Melody	Cycles
H1	1	a	A	6
	t1		B	6
H2	2	a	A	6
	t1		B	6
H3 (m)	3	b	C	5
	t1		B	6
H4	4	a	A	6
	t1		B	6

Pitch Set**Notes on Transcription**

- 1.5.1 The word “mül” in hem. 1 seems to imbalance the number of syllables and the poetic meter of the lyrics. It appears only in the song anthology HB1, as well as in

OA176 and in TA210. All other consulted concordances omitted this word. See text edition to this volume.

- 4.3 The scribe notated this group above the melodic line at a later stage.
- 7 The scribe did not label the *terennüm* section and apparently provided an incomplete *terennüm* section. The editor added one bar based on the corresponding passage in *TMKlii*. The editor also adopted the performance instruction “*sāz*”. However, the *segno* sign had to be replaced. The scribe had originally placed the *segno* sign at the beginning of *div. 8*.
- 10.3 The scribe notated this group above the melodic line at a later stage.
- 14 The scribe did not label the *miyân* section.

Consulted Concordances

HB1, p. 432; NE208, pp. 45–6; OA87, p. 35b; OA176, p. 193; TA-N 26; TA-N 27; TA210, p. 11; *TMKlii*, no. 15/1; TRT-NA, REPno. 4172.

C.M.