

CMO1-I/14b.5

# Sūz-ı dil-ārā düyek

Critical Report

Marco Dimitriou

Funded by the Deutsche Forschungsgemeinschaft  
(DFG, German Research Foundation) - Project number 265450875

This work is licensed under a Creative Commons Attribution- ShareAlike 4.0 International License

<https://creativecommons.org/licenses/by-sa/4.0/>



The electronic version of this work is also available at:

<https://corpus-musicae-ottomanicae.de>

## Sûz-ı dil-ârâ düyek

<b>Source</b>	TR-Iüne 217-15b
<b>Location</b>	P. [20], l. 1 – p. [21], l. 10
<b>Makâm</b>	Sûz-ı dilârâ
<b>Usûl</b>	Düyek
<b>Genre</b>	Peşrev
<b>Attribution</b>	[Selîm III (1761–1808)]
<b>Work No.</b>	CMOi0241

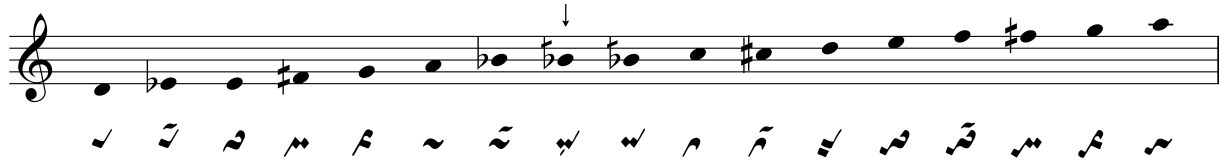
### Remarks

2 hânes only. The notation of the usûl is transcribed from the usûl table in TR-Iüne 211-9. The piece is a slightly different variant of the ‘Sûz-ı dilârâ düyek Sultân Selîm-i Şâlis Hâzretleriniñ’ notated on pp. 5–6 in the present manuscript. H2 deviates from the variant on pp. 5–6 in its modal specifics by means of different pitch signs. The editor has opted not to intervene but to reproduce the decisions of the scribe in the notation. Nonetheless, the passages where the pitch structures differ from each other are mentioned in the notes on transcription, since the possibility of scribal errors cannot be excluded.

### Structure

H1	: 6	4(T) :
H2	: 10	4(T) :

### Pitch Set



### Notes on Transcription

- 3.2 Erased beginning of div. 4 above the group. See note on 4.
- 4 The scribe initially skipped div. 4 and inserted it afterwards between l. 3 and l. 4 in red ink. A red mark leading from the passage to the end of div. 3 in l. 3 indicates that the red div. should be played after div. 3.
- 7 ♯ is placed above the div. sign of div. 6.
- 10.2  $\mu^{\circ}\beta\alpha$  for  $\mu^{\circ}\beta\alpha$  .

- 14.1–2 TR-Iüne 217-15a (pp. 5–6), TR-Iüne 212-10b, TR-Iüne 214-12:  $\overset{''}{\sim} \sim$ ; TR-Iütae 107:  $\sim \sim$ ; TR-Istek 1:  $\overset{''}{\sim} \sim$ ; TR-Istek 2:  $\overset{''}{\sim} \overset{\cdot}{\sim}$ .
- 16.1–3 TR-Iüne 217-15a (pp. 5–6), TR-Iüne 212-10b, TR-Iüne 214-12:  $\overset{''}{\sim} \sim \overset{''}{\sim}$ ; TR-Iütae 107:  $\sim \sim \overset{''}{\sim}$ ; TR-Istek 2:  $\overset{''}{\sim} \overset{\cdot}{\sim} \overset{''}{\sim}$ .
- 20.1–2 TR-Iüne 217-15a (pp. 5–6), TR-Iüne 212-10b, TR-Iüne 214-12:  $\overset{''}{\sim} \sim$ ; TR-Iütae 107:  $\sim \sim$ ; ST2:  $\overset{''}{\sim} \overset{\cdot}{\sim}$ .
- 22 The brackets signaling the ending of the first repetition of the teslîm only include a div. sign ( $\diamond$ ). This could suggest that the passage should be repeated according to the notation of the teslîm on p. 20 (div. 10). However, the variants of the piece in TR-Iüne 217-15a, pp. 5–6 as well as TR-Iüne 212-10b and TR-Iüne 214-12 give ( $\overset{''}{\sim} \sim \diamond$ ) as the ending for the first repetition of the teslîm after H2.

### Consulted Concordances

TR-Istek 1, p. 65; TR-Istek 2, fols. 74r–5r; TR-Iütae 107, pp. 166–7; TR-Iüne 212-10b, pp. 40–3; TR-Iüne 214-12, pp. 131–4; TR-Iüne 217-15a, pp. 5–6.

M.D.